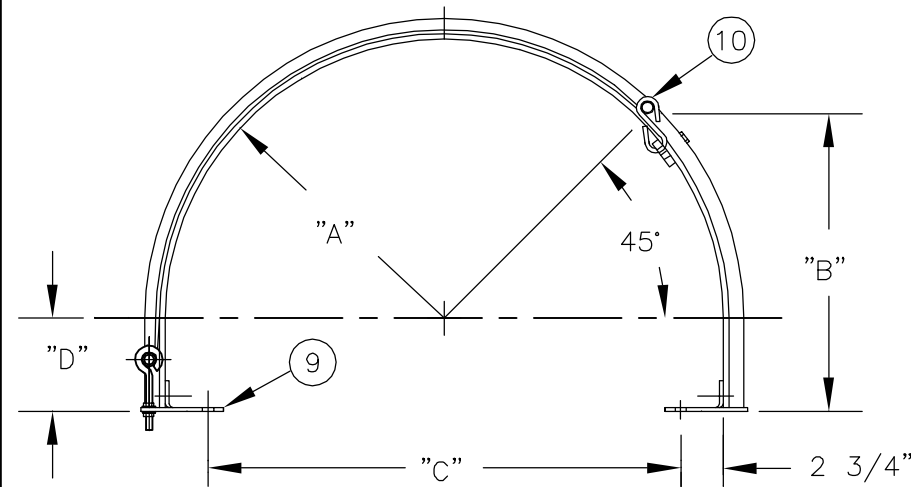


CH-75 SERIES 3/4 SMOOTH COVERS

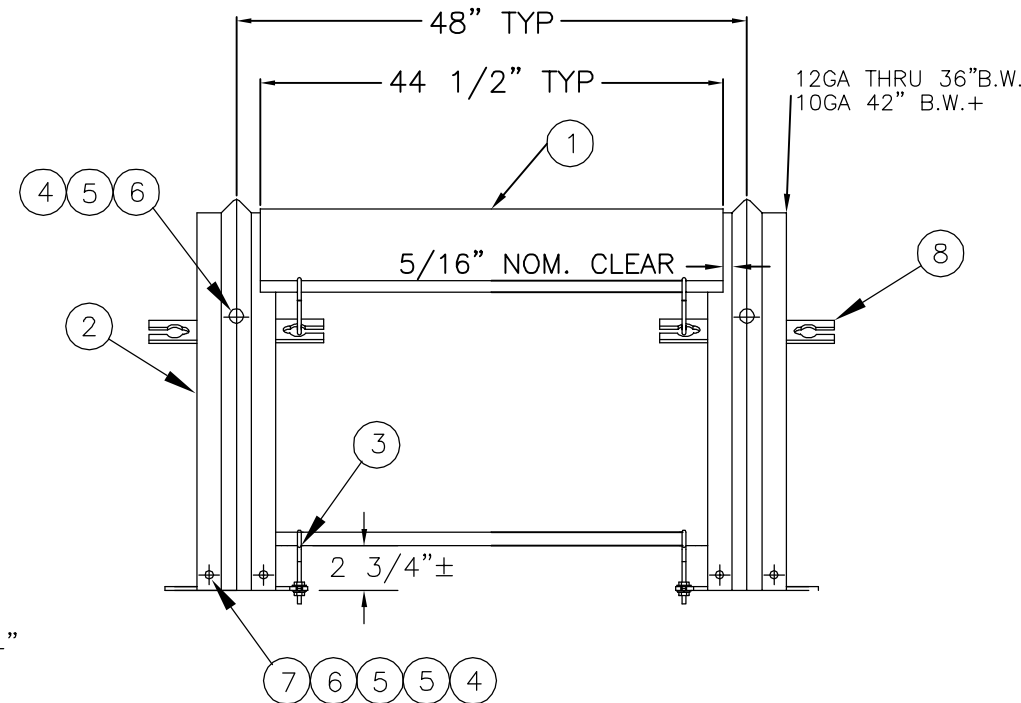
MATERIAL:

STANDARD COVERS AND BANDS ARE GALVANIZED STEEL.
ALUMINUM, STAINLESS STEEL AND PAINTED ARE AVAILABLE.

(All Dimensions are standard. Other options are available upon request)



HARDWARE TO MOUNT BASE BRACKETS TO STRINGER PROVIDED BY OTHERS.



PARTS LIST PER ASSEMBLY				
ITEM	PART NUMBER	DESCRIPTION	QTY	TOTAL
1	CH_GC_	Cover, full smooth, galv g-90	P/C	-
2	CH_GB	Support band, galv g-90	-	P/B
3	12-6EBS-ZN	Eyebolt set, 1/2"-13 x 6", w/2 flanged hex nuts and 1 lock washer, zinc plated	2	-
4	516HN-ZN	Nut, hex, 5/16-18, zinc plt	-	5
5	516-1HB-ZN	Bolt, hex head, 5/16"-18 x 1"	-	5
6	516LW-ZN	Washer, flat, 5/16", zinc	-	9
7	516FW-ZN	Washer, lock, 5/16", zinc	-	4
8	RB-G	Retaining/inspection bar, 7ga galv	-	1
9	FB-G	Foot bracket, 7ga galv	-	2
10	SH-ZN	3-1/4" (O.A. LG) S-HOOK ZINC	2	-

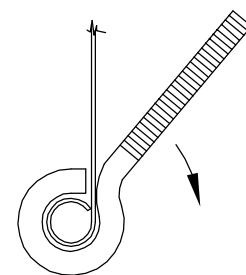
Note: All standard hardware is grade 2, zinc plated.
Hot dipped galvanized, stainless steel or painted available upon request.

DESIGN NOTE
Standard CH75 Series Covers are designed for conveyor frames with outside dimensions of belt width +12".
Eye bolts may hit conveyor structure when top cords are fabricated from "T" section dims. This should be verified before ordering.

SPECIFICATIONS

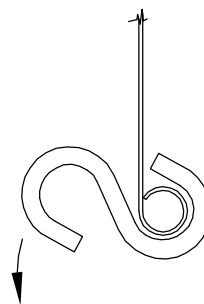
ASSEMBLY NO.	BELT WIDTH	"A"	"B"	"C"	**"D"	WT
CH7518GA40	18"	16 1/4"	19-1/4"	27"	6"	45
CH7520GA40	20"	17 1/4"	20"	29"	6"	48
CH7524GA40	24"	19 1/4"	21 7/8"	33"	6"	50
CH7530GA40	30"	22 1/4"	24"	39"	6"	54
CH7536GA40	36"	25 1/4"	26 1/8"	45"	6"	61
CH7542GA40	42"	28 1/4"	28 1/4"	51"	6"	67
CH7548GA40	48"	31 1/4"	30 3/8"	57"	6"	72
CH7554GA40	54"	34 1/4"	32 1/2"	63"	6"	77
CH7560GA40	60"	37 1/4"	34 5/8"	69"	6"	83
CH7572GA40	72"	43 1/4"	39"	81"	6"	93
CH7584GA40	84"	49 1/4"	43"	93"	6"	104

** 6" is std tangent, other available upon request.

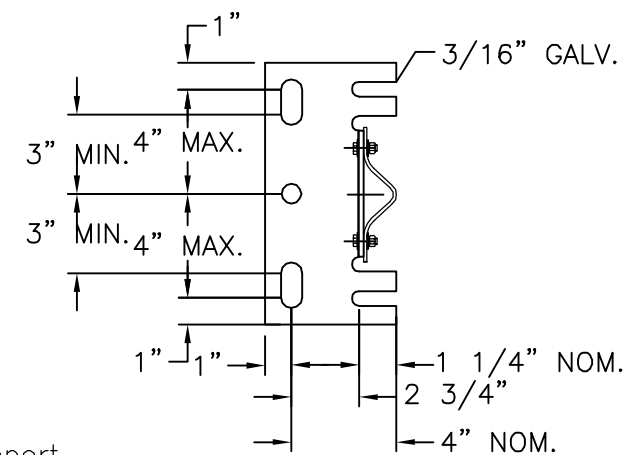


EYEBOLT/S-HOOK INSTALLATION DETAIL

Slide eyebolt/S-hook loop over edge of cover end roll and rotate eyebolt/S-hook into position.



BASE BRACKET DETAIL SECTION "A-A"



INSTALLATION PROCEDURE

1. Bolt base brackets [9] and inspection bar [8] to support band [2], using 5/16" hardware [4-7].
2. Locate support band on conveyor at desired spacing.
3. Drill 11/16" dia. holes in conveyor to match base brackets.
4. Bolt bands to conveyor with inspection bar on desired side. This 5/8" hardware is normally not furnished by RPS. Bands must be perpendicular to conveyor support.
5. Position cover [1] over support bands and attach top portion of cover to inspection bars with "S" hooks [10].
6. Fasten rear side of cover to base brackets with 1/2" eyebolts [3]. See Cover Attachment & Eyebolt Installation Details.

This print or drawing is the property of R.P.S. Engineering, Inc. and is confidential or proprietary information. It is not to be copied, reproduced, used or disclosed, in whole or part, unless in reference to contracts or proposals of this company. Nothing disclosed herein which is not publicly available may be used without written permission.



Jamieson Equipment Company
5314 Palmero Court | Buford, GA 30518
800.875.0280 | sales@jamiesonequipment.com
www.jamiesonequipment.com